

TECHNICAL SPECIFICATIONS

1500X

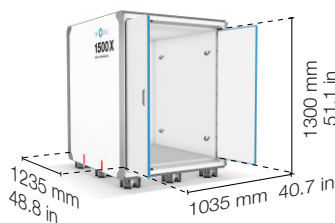
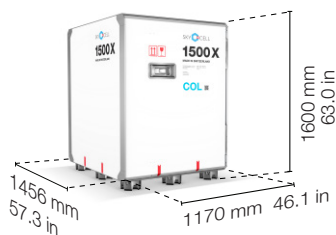
COL +2°C to +8°C

X-tra Performance

Protecting temperature-sensitive pharma products at +2°C to +8°C, the 1500X-COL redefines reliability with an unrivalled 270-hour independent runtime.

Key Features

- **Door-to-door security** for an unbroken supply chain
- **Protection under extreme temperatures** across the entire globe
- **Versatile handling**
Fast to load, easy to ship
- **Optimal placement** of four containers on one PMC-pallet
- **Self-recharging ability**
in temperature controlled warehouses and trucks
- **Full payload preservation**
Absorbing shock and vibration



4 containers fit on one PMC, 18 into a Truck

Temperature

Operating range (External conditions)	-40°C to +70°C	-40°F to +158°F
Internal temperature range	+2°C to +8°C	+36°F to +46°F

Performance

Independent runtime	270 hours at +20°C	270 hours at +68°F
---------------------	---------------------------	---------------------------

Dimensions

External cube (volume)	2.7 m³	95.35 ft³
External dimensions (L x W x H)	1456 x 1170 x 1600 mm	57.3 x 46.1 x 63.0 in
Internal cube	1.66 m³	58.6 ft³
Internal dimensions (L x W x H)	1235 x 1035 x 1300 mm	48.5 x 40.7 x 51.1 in

Weight

Tare weight ±5%	379 kg	835 lbs
Max payload weight	1000 kg	2204 lbs

Data Logging Inside & Outside

Temperature	-40°C to +70°C at 0.1°C resolution and ±0.5°C accuracy
-------------	---



Safe

Audited performance of < 0.1% temperature deviations.



Secure

Track and trace: Visibility of your shipments in SkyMind platform.



Sustainable

Reduce CO₂ emissions by up to 50% compared to other solutions.



TECHNICAL SPECIFICATIONS

1500X

COL +2°C to +8°C



Designed for zero loss: 270 hours independent runtime to protect medicine from door-to-door for an unbroken cold chain.



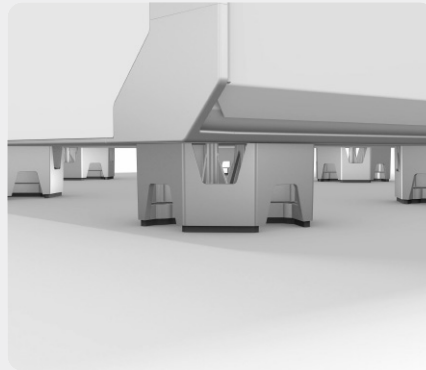
Monitor shipment conditions in real time on SkyMind to anticipate and identify lane risks.



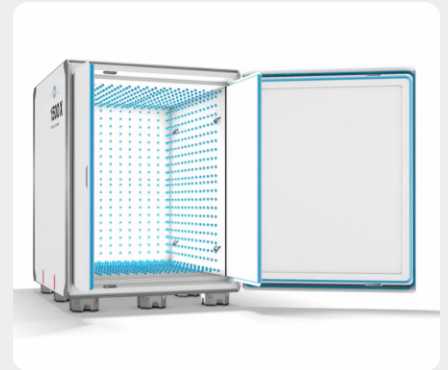
Less weight, less volume, lower costs—more payload space. The 1500X's making it SkyCell's most sustainable container.



400% stronger frame using aerospace diecast technology.



Shock and vibration absorption.



High energy density and improved energy distribution system.

SkyCell Solutions. **Designed for Zero Product Loss**



1500DF

1500DF hybrid containers for transporting highly temperature-sensitive pharmaceuticals.

Internal Temperature Ranges
 -90°C to -20°C
 -90°C to -60°C



SkyMind Pharma

Integrated with Microsoft Teams and CoPilot, SkyMind Pharma identifies high-risk lanes, optimizes routes, reduces product loss, and enables precise carbon reporting.



Loggers

SkyCell IoT loggers ensure continuous, seamless monitoring with real-time tracking, trajectory visualization, and instant alerts.



Contact us today
 pharma.containers@skycell.ch