

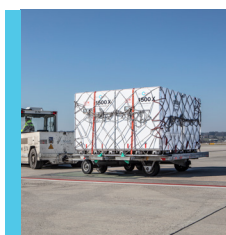


SKY  CELL

Sustainability Report

2023

Table of Contents



Page 03

About SkyCell

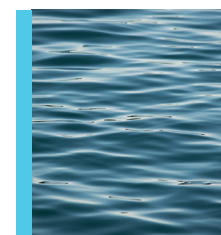
Values & Principles
Vision
Products & Services



Page 28

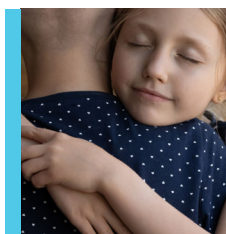
Circularity

Policies & Goals
Our Actions
Our Results



Page 50

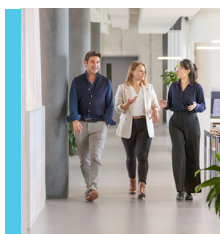
Index



Page 11

Context

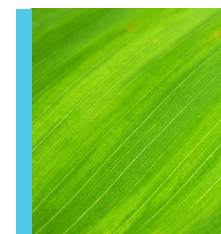
About this Report
Message from Chairman
Sustainability Focus Areas



Page 33

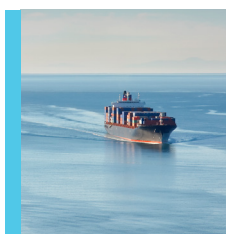
Cooperation

Investing in Employees
Being a Reliable Partner
Supplier Engagement



Page 56

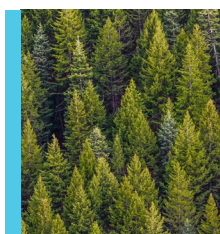
Glossary



Page 16

Climate

Policies & Goals
Actions & Results
On track to 2040



Page 41

Performance

Circularity
Climate
Cooperation



About SkyCell

About SkyCell

At SkyCell, our dedication lies in transporting medications to millions of patients globally while also advancing sustainable logistics practices.

Our innovative cold-chain packaging solutions combine Swiss engineering expertise with proprietary software to keep temperature-sensitive pharmaceuticals safe and secure during transport, whilst also minimizing the carbon emissions associated with medicine transportation.

Established in 2012, SkyCell is a privately owned company headquartered in Switzerland. With offices in Zürich and Zug and a production hub in Basel, we operate a network of over 30 service stations globally. Our unique model relies on delivering containers directly to customer loading sites, eliminating the need for airport pickups. This reduces the number of service stations required compared to traditional container providers, as our trucks can reach loading points more efficiently.

The oversight of SkyCell's interests and overall responsibilities is entrusted to 4 C-level executives and a Board of Directors. Richard Ettl, co-founder, serves as CEO and oversees all commercial aspects of the business. Nico Ros, co-founder, holds the position of CTO leading all technical departments and serving as Chairman of the Board of Directors. Figure 1 is a simplified representation of the governance structure at SkyCell.

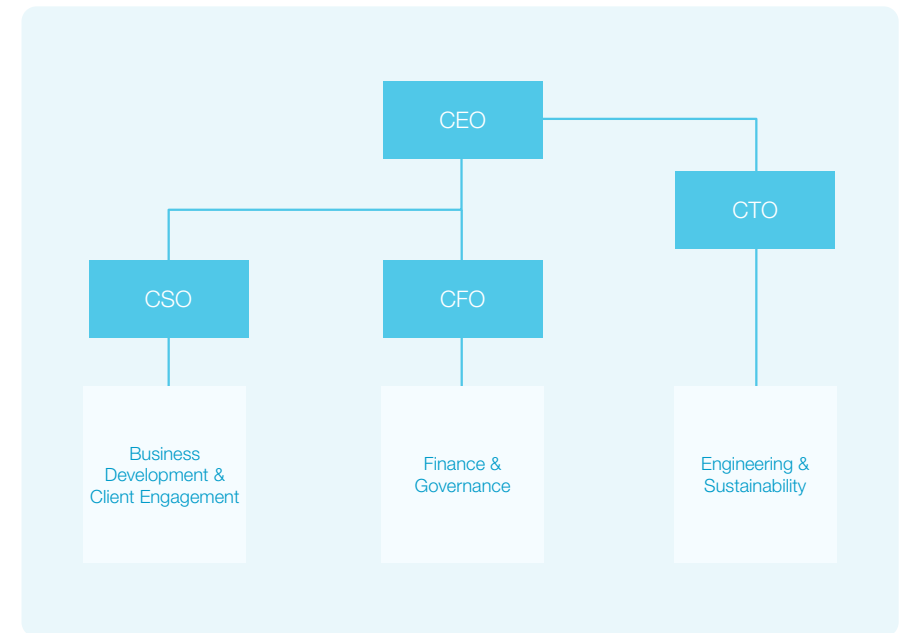


Fig. 1
A simplified organization chart showing the managerial structures of SkyCell

WE SUPPORT



– Continued

About SkyCell

We are a climate-neutral company, by reducing and removing our Scope 1 and 2 emissions, and we are committed to being end-to-end net-zero by 2040, an ambitious journey we started in 2021. Our emission reduction targets are validated by the Science Based Targets Initiative (SBTi), and our climate strategy goes in line with the Paris Climate Agreement. In addition, we are committed to implementing the Ten Principles of the United Nations Global Compact.

We have developed a range of services beyond our cold chain container solutions, to double down on our commitment to sustainability. Our new AI-powered proprietary software platform, SkyMind, can simulate the CO₂ impact of shipments, and optimize routes to minimize their environmental impact.

2023 Highlights

Climate-neutral since 2021

in own direct operations
(Scopes 1&2 reduced and removed)

19%

Scope 3 carbon intensity already
reduced compared to base year 2020

Net0 by 2040

on track to achieving Net0
in our entire supply chain

>60,000 tCO₂

avoided by a typical
SkyCell customer

ISO 27001

information security
certification obtained

<0.05%

temperature excursions
and <0.0% product loss

32%

of management positions
held by women

EcoVadis Platinum

medal achieved





Society



Pharma



Partners



Employees



Suppliers

Our Values & Principles

At SkyCell, our commitment to sustainability, reliability, and innovation forms the foundation of our operations. We persistently venture to foster a positive impact on society and the pharmaceutical supply chain. Our commitment to fairness and clarity is articulated in our company's array of Policies, Code of Conduct, and Employment Regulations. These documents are designed to ensure equitable treatment of our employees and establish clear guidelines for interpersonal interactions within the organization.

With one of our core priorities being sustainability, we actively seek partners who share similar goals for creating a more sustainable pharmaceutical supply chain. With this in mind, we have established a Supplier and Partner Code of Conduct, and we also integrate sustainability considerations into our onboarding process for any new strategic suppliers.

Additionally, we have implemented a robust Internal Control System as a fundamental component of our governance structure. This safeguards financial transactions against fraud while also strengthening our compliance with legal and ethical standards. Our financial statements, along with the Internal Control System, undergo annual external audits in line with the Swiss Code of Obligations and Swiss Auditing Standards.

“Lead the pharmaceutical supply chain by assisting pharma companies to achieve zero medicine loss and zero CO₂ emissions”

**You are reading a preview.
To get the full report,
please download it here.**

DOWNLOAD REPORT

Our Vision

The Global and Pharma industry is expected to reach a market size of \$1.2 trillion by 2027. While the growth is exciting, it raises concerns about the industry's capacity to meet its mid-century carbon reduction targets. One significant contributor to the industry's environmental footprint is the loss of pharmaceuticals due to inadequate temperature control during transportation. According to the ICHM Institute for Human Data Science, the biopharma industry loses approximately \$20 billion annually as a result of failures in temperature-controlled logistics, leading to wasted resources and additional emissions from re-manufacturing and re-shipping.

By 2025, SkyCell is committed to reducing our own emissions and supporting our customers in achieving theirs. Subsequently, we've pioneered cutting-edge hardware and software solutions to ensure the secure transportation of temperature sensitive pharmaceuticals globally.

Our customers demonstrate a temperature excursion rate of less than 0.01% and avoid emissions with each shipment. We have remained steadfast in our commitment to sustainability and safety. We further this commitment with our proprietary software platform,

which provides shipment and temperature data through automation, real-time alerts and visibility, and predictive analytics. The ecosystem supply chain stakeholders can make better decisions.

Sustainability isn't just an internal priority at SkyCell – it's a core value we share with our customers. By leveraging our expertise through the analysis, we guide them towards achieving their net-zero emissions goals. We remain firmly committed to intensifying our efforts in the critical area.

Download the full report
to learn more about our
vision and goals.